



**CITY OF LOS ANGELES TREE REPORT
4100 SUNSET BOULEVARD
LOS ANGELES, CALIFORNIA 90029**

SUBMITTED TO:

**DAVE RAND
AMBRUSTER GOLDSMITH & DELVAC
12100 WILSHIRE BOULEVARD, SUITE 1600
LOS ANGELES, CALIFORNIA 90025**

PREPARED BY:

**CY CARLBERG
ASCA REGISTERED CONSULTING ARBORIST #405
ISA CERTIFIED ARBORIST #WE 0575A
ISA QUALIFIED TREE RISK ASSESSOR
CAUFC CERTIFIED URBAN FORESTER #013**

Santa Monica Office
828 Fifth Street, Suite 3
Santa Monica, California 90403
Office: 310.451.4804

Sierra Madre Office
80 West Sierra Madre Boulevard, #241
Sierra Madre, California 91024
Office: 626.428.5072



JUNE 2020

www.cycarlberg.com

4100 WEST SUNSET BOULEVARD, LOS ANGELES, CALIFORNIA – TREE REPORT

TABLE OF CONTENTS

COVER LETTER	1
TABLE 1 – TREE INVENTORY	2
EXHIBIT A – AERIAL IMAGE OF SUBJECT PROPERTY	4
EXHIBIT B – REDUCED COPY OF TREE LOCATION EXHIBIT	5
EXHIBIT C – TREE PHOTOGRAPHS	6
RESUME.....	7



June 2020

Dave Rand
Ambruster Goldsmith & Delvac
12100 Wilshire Boulevard, Suite 1600
Los Angeles, California 90025

Re: 4100 West Sunset Boulevard, Los Angeles, California 90029

Dear Mr. Rand,

This letter addresses our office's site visit of December 1, 2017 to the property located at 4100 West Sunset Boulevard in Los Angeles, California. We were retained to visit the property and determine if any trees considered protected by the City of Los Angeles Tree Preservation Ordinance No. 177,044 were present. The table on the following page sets forth the data for the three (3) private property trees and one off-site tree that were inventoried. ***None of the private property species are considered protected by the Ordinance.*** These three private property trees are proposed to be removed. The one off-site tree to the southwest of 4100 Sunset may require canopy pruning if equipment access will occur at this alley entrance to the property.

Please feel welcome to contact me at our Santa Monica office if you have any immediate questions or concerns.

Respectfully submitted,

Cy Carlberg, Registered Consulting Arborist
Principal, Carlberg Associates



Santa Monica Office
cy@cycarlberg.com

Santa Monica Office
828 Fifth Street, Suite 3
Santa Monica, California 90403
Office: 310.451.4804

Sierra Madre Office
80 West Sierra Madre Boulevard, #241
Sierra Madre, California 91024
Office: 626.428.5072

www.cycarlberg.com

TABLE 2 – TREE INVENTORY

Tree #	Common Name Botanical Name	Dbh(s) (inches)**	Height (feet)	Canopy Spread (feet)	Health Grade	Structure Grade	Tree Disposition	Protected Tree Y/N
1	Tree of heaven <i>Ailanthus altissima</i>	24	22'	12'	C	C	Remove	No
2	Mexican fan palm <i>Washingtonia robusta</i>	BT 38'*	44'	12'	A	A	Remove	No
3	Mexican fan palm <i>Washingtonia robusta</i>	BT 24'	30'	13'	A	A	Remove	No
OS4***	China doll tree <i>Radermachera sinica</i>	11	30	30'	C	B	Preserve, Off-Site tree	Right-of-Way Tree

*BT – Brown Trunk Height: Nursery Standard Measurement (from grade to the base of the newest emerging spear).

**DBH – Diameter at Breast Height – a forestry term used to indicate trunk diameter measured at 4.5 feet above grade. Typically used as a representation of tree size.

***OS – Offsite tree



EXHIBIT A - AERIAL IMAGE OF SUBJECT PROPERTY



4100 West Sunset Boulevard
Los Angeles
Source: Zimas



EXHIBIT B - REDUCED COPY OT TREE LOCATION EXHIBIT

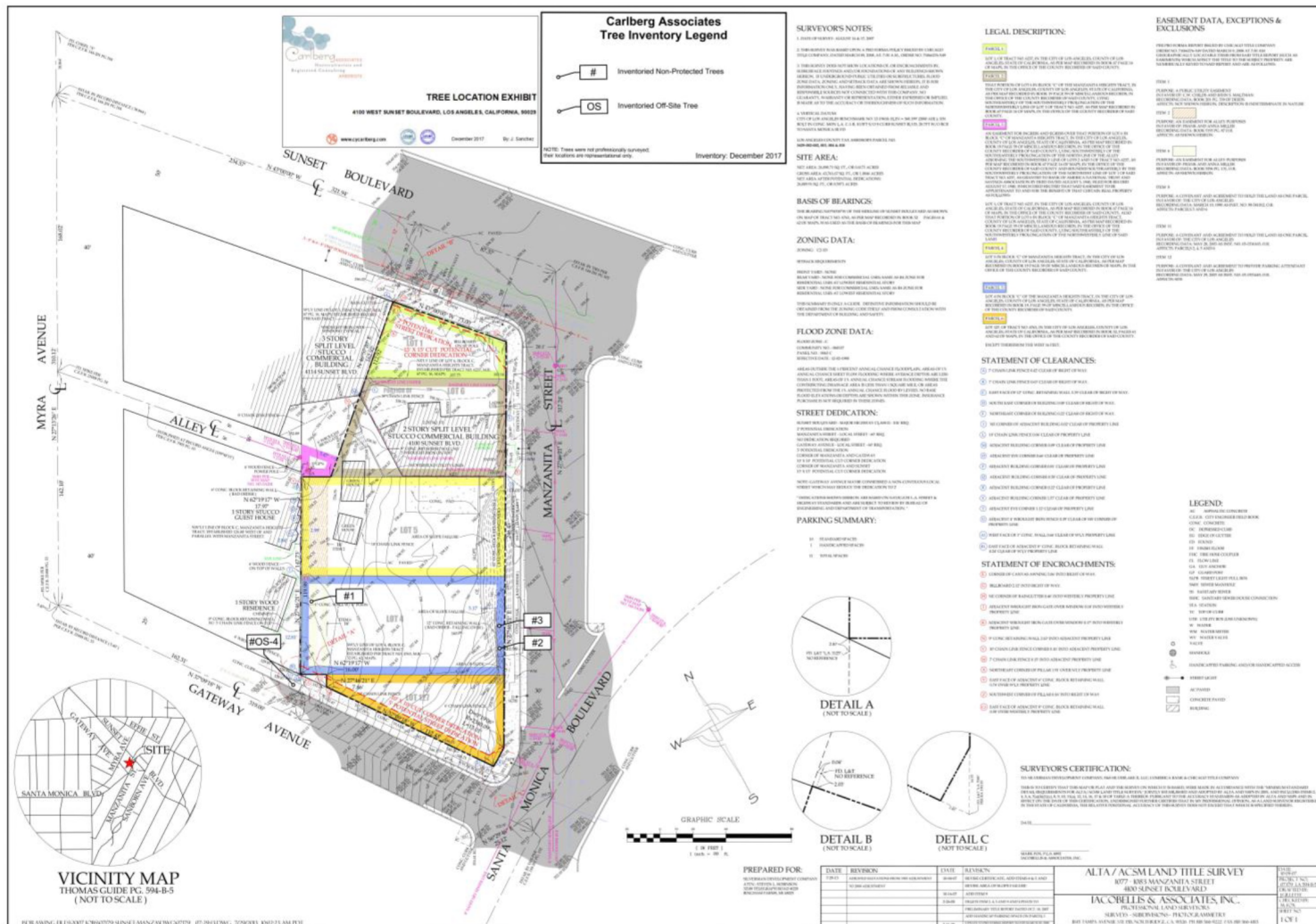


EXHIBIT C – TREE PHOTOGRAPHS





**CY CARLBERG
CARLBERG ASSOCIATES**

828 Fifth Street, Suite 3 • Santa Monica • California • 90403
cy@cycarlberg.com • o: 310.451.4804 • www.cycarlberg.com

Education	B.S., Landscape Architecture, California State Polytechnic University, Pomona, 1985 Graduate, Arboricultural Consulting Academy, American Society of Consulting Arborists, Chicago, Illinois, February 2002 Graduate, Municipal Forestry Institute, Lied, Nebraska, 2012
Experience	Consulting Arborist, Carlberg Associates, 1998-present Manager of Grounds Services, California Institute of Technology, Pasadena, 1992-1998 Director of Grounds, Scripps College, Claremont, 1988-1992
Certificates	Certified Arborist (#WE-0575A), International Society of Arboriculture, 1990 Registered Consulting Arborist (#405), American Society of Consulting Arborists, 2002 Certified Urban Forester (#013), California Urban Forests Council, 2004 Qualified Tree Risk Assessor, International Society of Arboriculture, 2011

AREAS OF EXPERTISE

Ms. Carlberg is experienced in the following areas of tree management and preservation:

- Tree health and risk assessment
- Master Planning
- Historic landscape assessments, preservation plans, reports
- Tree inventories and reports to satisfy jurisdictional requirements
- Expert Testimony
- Post-fire assessment, valuation, and mitigation for trees and native plant communities
- Value assessments for native and non-native trees
- Pest and disease identification
- Guidelines for oak preservation
- Selection of appropriate tree species
- Planting, pruning, and maintenance specifications
- Tree and landscape resource mapping – GPS, GIS, and AutoCAD
- Planning Commission, City Council, and community meetings representation

PREVIOUS CONSULTING EXPERIENCE

Ms. Carlberg has overseen residential and commercial construction projects to prevent damage to protected and specimen trees. She has thirty-five years of experience in arboriculture and horticulture and has performed tree health evaluation, value and risk assessment, and expert testimony for private clients, government agencies, cities, school districts, and colleges. Representative clients include:

The Huntington Library and Botanical Gardens	The City of Claremont
The Los Angeles Zoo and Botanical Gardens	The City of Beverly Hills
The Rose Bowl and Brookside Golf Course, Pasadena	The City of Pasadena
Walt Disney Concert Hall and Gardens	The City of Los Angeles
The Art Center College of Design, Pasadena	The City of Santa Monica
Pepperdine University	Santa Monica/Malibu Unified School District
Loyola Marymount University	San Diego Gas & Electric
The Claremont Colleges (Pomona, Scripps, CMC, Harvey Mudd, Claremont Graduate University, Pitzer, Claremont University Center)	Los Angeles Department of Water and Power
Quinn, Emanuel, Urquhart and Sullivan (attorneys at law)	Rancho Santa Ana Botanic Garden, Claremont
Getty Trust – Eames House	Latham & Watkins, LLP (attorneys at law)
Historic Resources Group	Architectural Resources Group
	AHBE Landscape Architects
	Moule and Polyzoides, Architects and Urbanists

AFFILIATIONS

Ms. Carlberg serves with the following national, state, and community professional organizations:

- California Urban Forests Council, Board Member, 1995-2006
- Street Tree Seminar, Past President, 2000-present
- American Society of Consulting Arborists Academy, Faculty Member, 2003-2005; 2014
- American Society of Consulting Arborists, Board of Directors, 2013-2015
- Member, Los Angeles Oak Woodland Habitat Conservation Strategic Alliance, 2010-present

